



KONICA MINOLTA

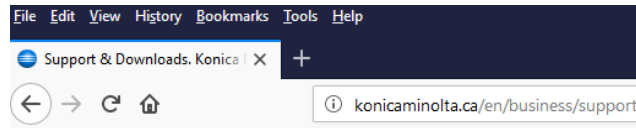
Installing a Printer Driver (PC)

Make & Models: All Konica Minolta models ending 4, 4e, & 7.

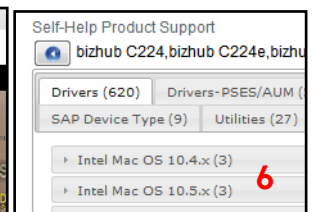
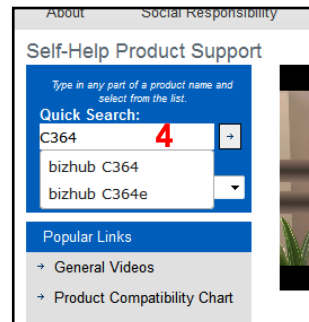


What's It Do?

Print drivers for large desktop devices and copiers are not native to Windows or automatically searchable like most Plug and Play printers. You will need to download the proper driver from the Konica Minolta website and install it in order to use all the features that come with your device. If you have the original driver disc that came with the device, you can simply load it into your CD-ROM and the autorun program will guide you through the installation (see reverse for screenshots).



Downloading the Proper Driver



1. Open your web browser and go to www.konicaminolta.ca.
2. Click on **Business Solutions**.
3. In the blue top menu bar click on **Support & Downloads**. This will take you to the **Self-Help Product Support** page. (You can bookmark this page for future use).

4. In the search field type in the model number of your device. Relevant search results will automatically appear. Click on the appropriate model.

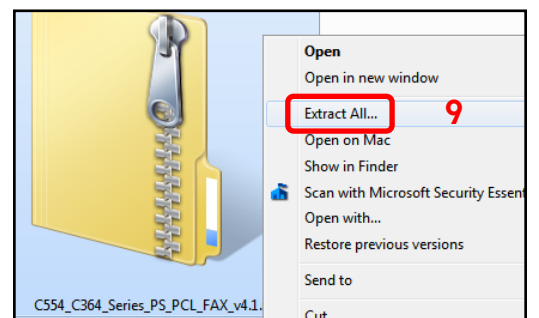
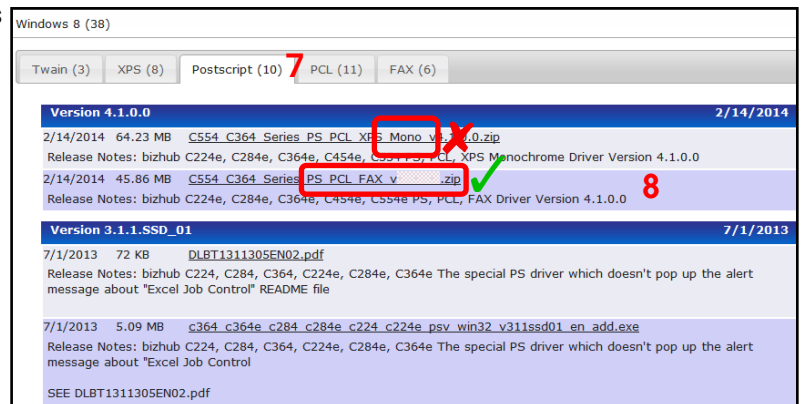
5. Click on the **Drivers** button/icon.

6. From the OS list select your appropriate operating system. (See Tips & Tricks section below for notes on OS and driver types). Click **Search** to display the results.

7. Click on the **Postscript** or **PCL** tab.

8. Click on a **.zip** file. Note for Colour device users: the driver file containing the word MONO means that the driver BLOCKS colour altogether. If you want to have the option of printing colour, but manage the colour usage, install the regular driver and simply default to Grayscale, making users choose colour when they need it.

9. Once the download is complete, find the .zip file, right click on it and click on Extract All (this option will vary depending on your version and setup of Windows). You will have the option of select where to extract the files to. Make sure you pick folder that is easy to find on your computer.



See reverse for instructions on setup.



Tips & Tricks

32-bit or 64-bit? Konica Minolta drivers actually come in zip files with a complete package of drivers, including 32-bit and 64-bit versions, so no need to verify which type of Windows you have. They also contain the Postscript, PCL and Fax drivers. The XPS driver needs to be downloaded separately.

What's the difference between Postscript and PCL, and XPS? Postscript, PCL, and XPS are all different languages your computer uses for translating your file into the printer's own language. On colour devices they will give you slightly different colours, but the options are almost entirely the same. Some programs, like AutoCad, DOS-based software, etc. prefer Postscript (PS) over the others, but that is rare. Any of the 3 drivers will work if you are mostly using MS Office. If using graphics software like Adobe Illustrator, or Photoshop, it is recommended you use the Postscript driver. The Fax driver is only needed if you have the optional fax kit installed and wish to PC Fax.

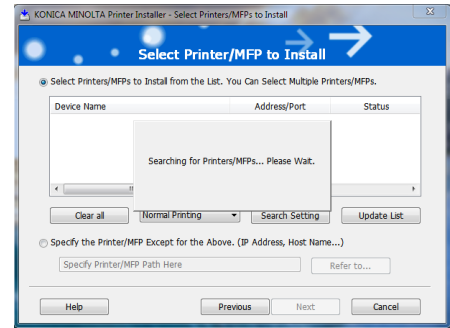
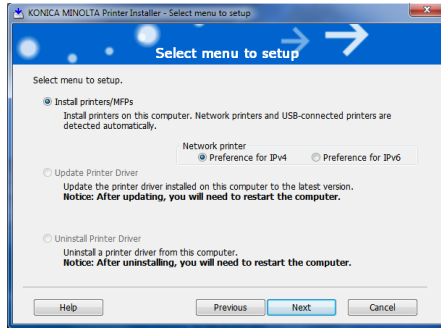
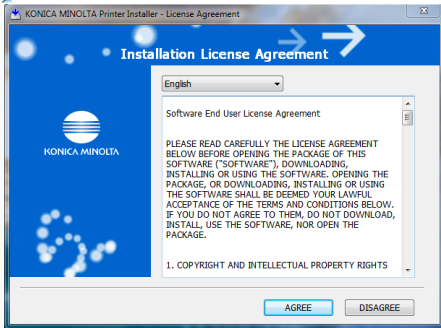


KONICA MINOLTA

Installing a Printer Driver (PC)

Name

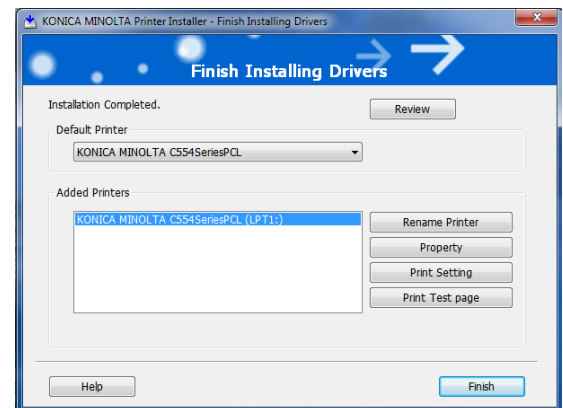
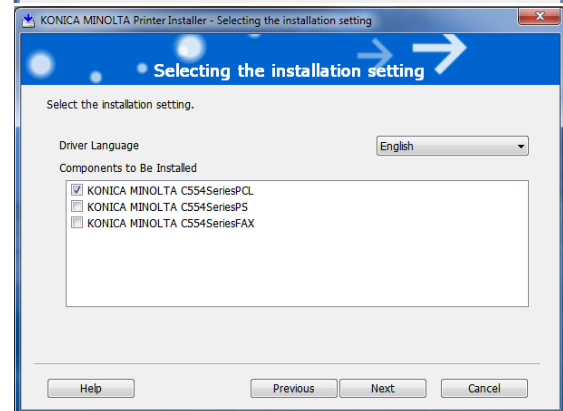
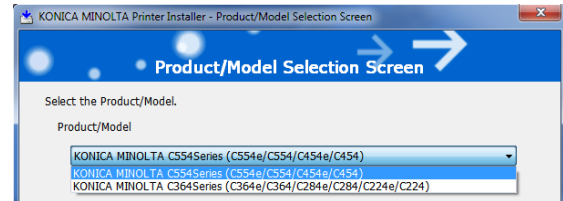
- Bmp
- Drivers
- Lang
- PPD-PageMaker
- Readme
- setupsub
- Setup
- Setup
- Setup64



Installing the Printer Driver

If using the CD provided with the device skip to step 2.

1. Open the folder containing the files you just downloaded (see reverse). You should see 2 Setup icons, one for 32-bit Windows, the other for 64-bit. If you click on the wrong one you will simply get an error message saying the folder does not contain the proper files for your operating system. You can then select the other one.
2. Once the **Installation License Agreement** pops up click **Agree** to continue.
3. Leave the **Network Printer** preference on **IPv4** as already selected and click **Next** to continue.
4. The utility will search your network for a compatible printer and list it. This may take a few minutes. Rarely, the utility will not find your printer and you will need to specify the IP address you will be using. If the driver file you downloaded is used for multiple model series, you may need to select the appropriate series from the list. Click **Next** to continue.
5. Select the drivers you wish to install. (See Tips & Tricks on reverse for notes on driver types). Click **Next** to continue.
6. Click **Install** to start the installation process.
7. Once installation is completed, you will get a list of the drivers you have installed. At this point you can rename them if you wish, or click on **Print Setting** to change the default print settings. See Tips & Tricks section below for recommended settings. Click **Finish** to exit the utility.



Tips & Tricks

The driver installs with certain settings **on** by default: 2-sided, Auto Colour (on colour devices), White Background Removal and Excel Job Control.

The **1-Sided/2-Sided** option can be found on the **Layout Tab**.

To control colour printing costs, change the default colour option to **Grayscale (Quality Tab)**. Choose colour only when needed.

To ensure maximum ease of use and convenience, it is recommended you uncheck the options for White Background Removal and Excel Job Control (**Other Tab**).